

REPUBLIC

Long Island's Executive Airport

Operations and Noise Update 2010

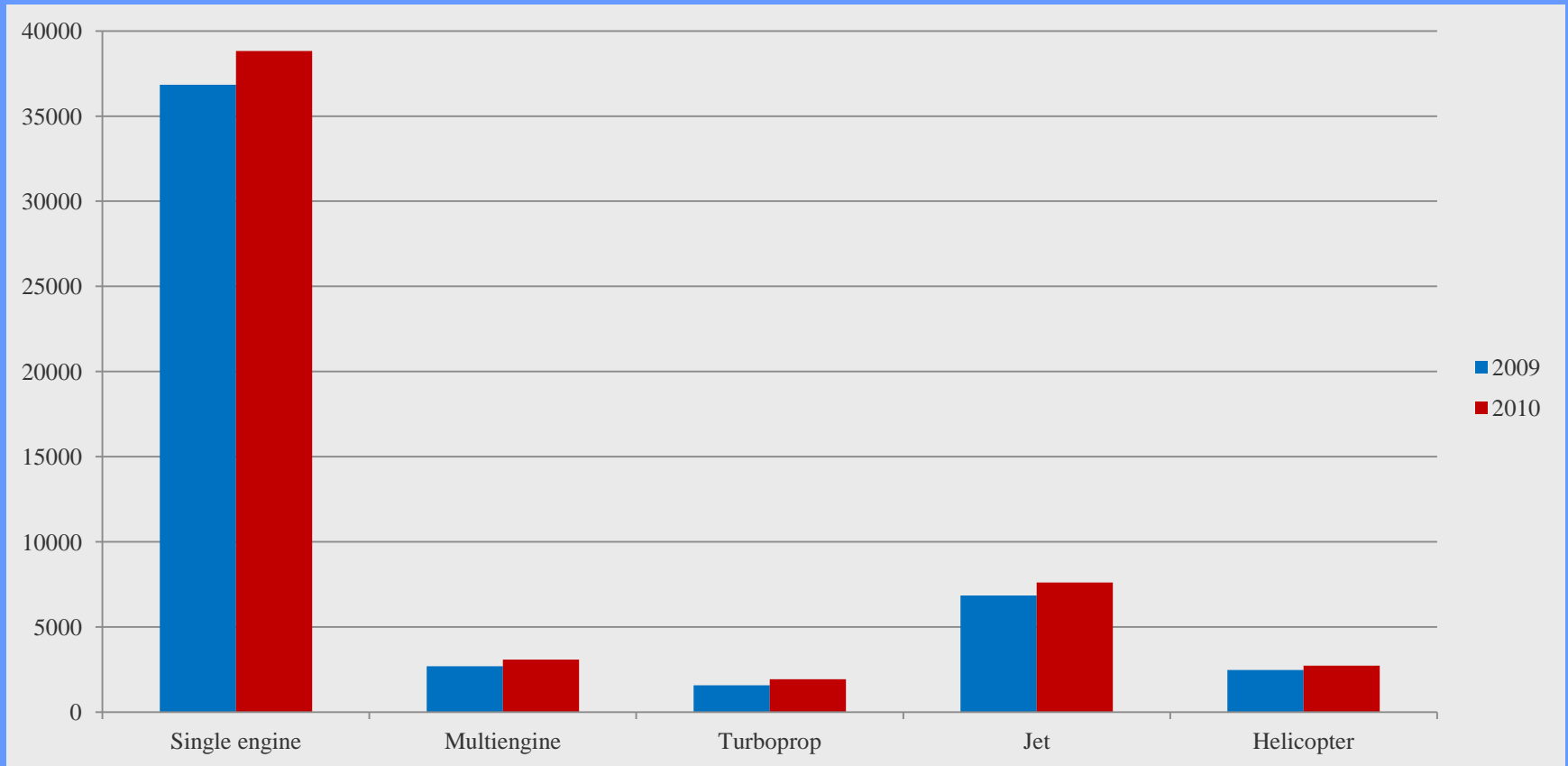
Total 2010 Operations – 108,328



UP 7% from 2009

Landings By Aircraft Type

Total Landings Increased by 7% in 2010



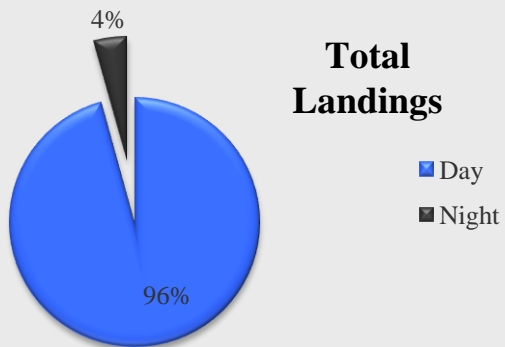
Changes in the Number of Landings from 2009 by Aircraft Type

Single Engine	+ 5 %	
Multi Engine (Piston)	+ 15 %	
Turboprop	+ 23 %	
Jet	+ 11 %	
Helicopter	+ 10 %	
Total Increase		+ 7 %

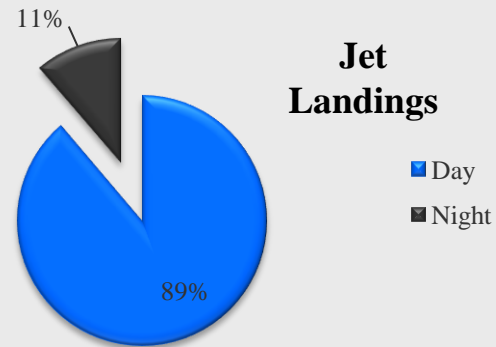
Aircraft Operations Day / Night Split

2010

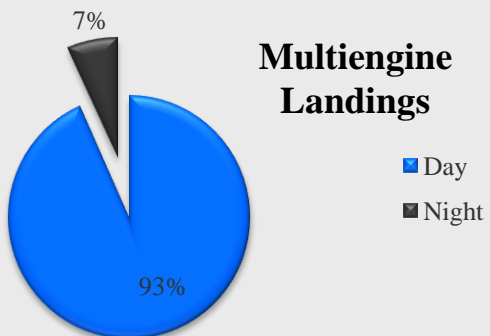
Total Landings



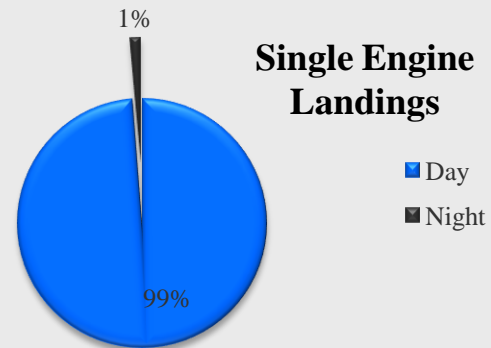
Jet Landings



Multiengine Landings

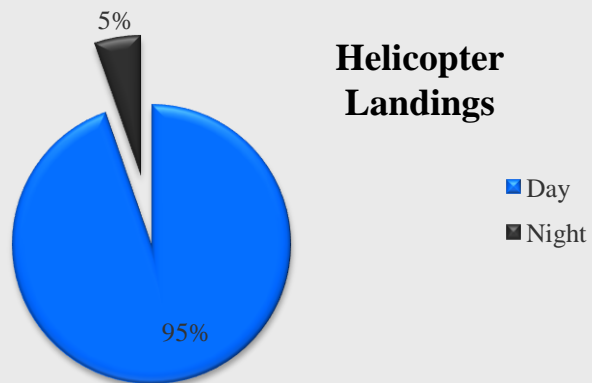
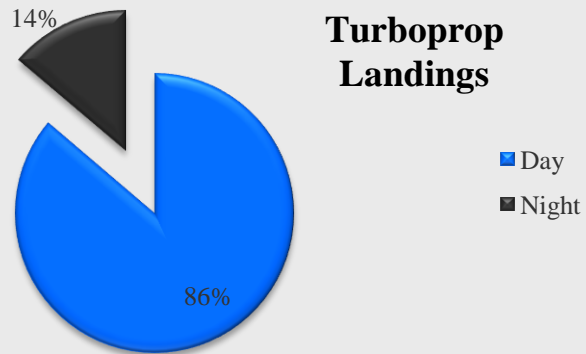


Single Engine Landings



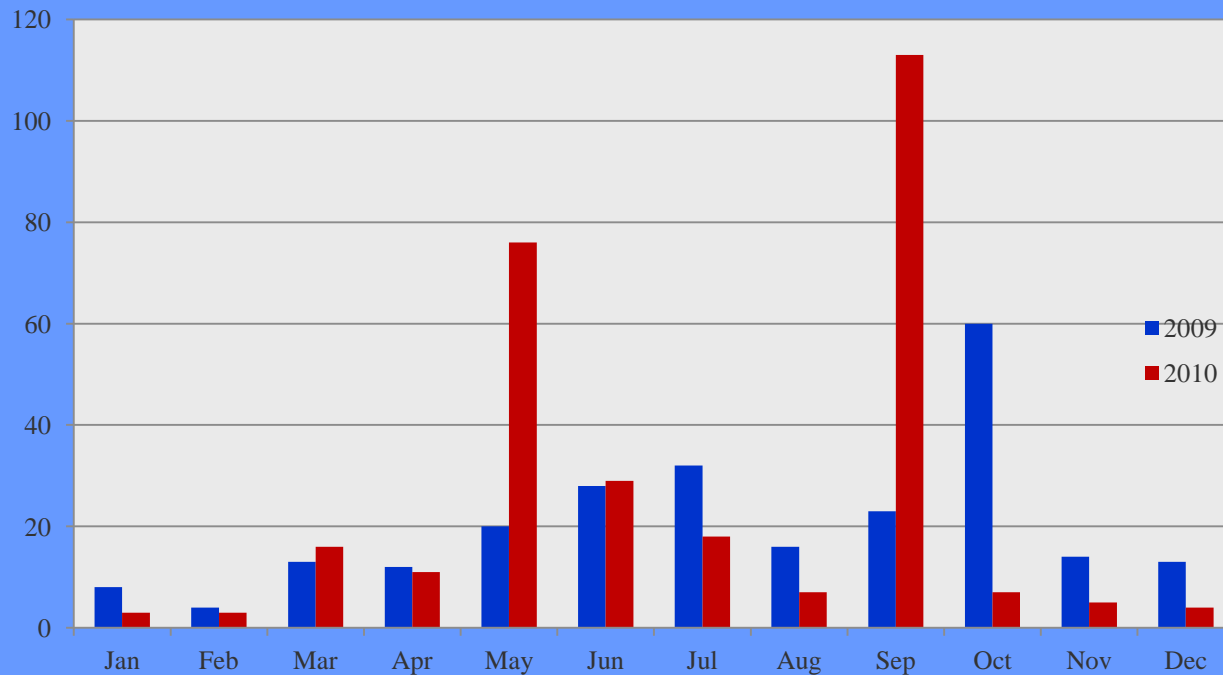
Aircraft Operations Day / Night Split

2010



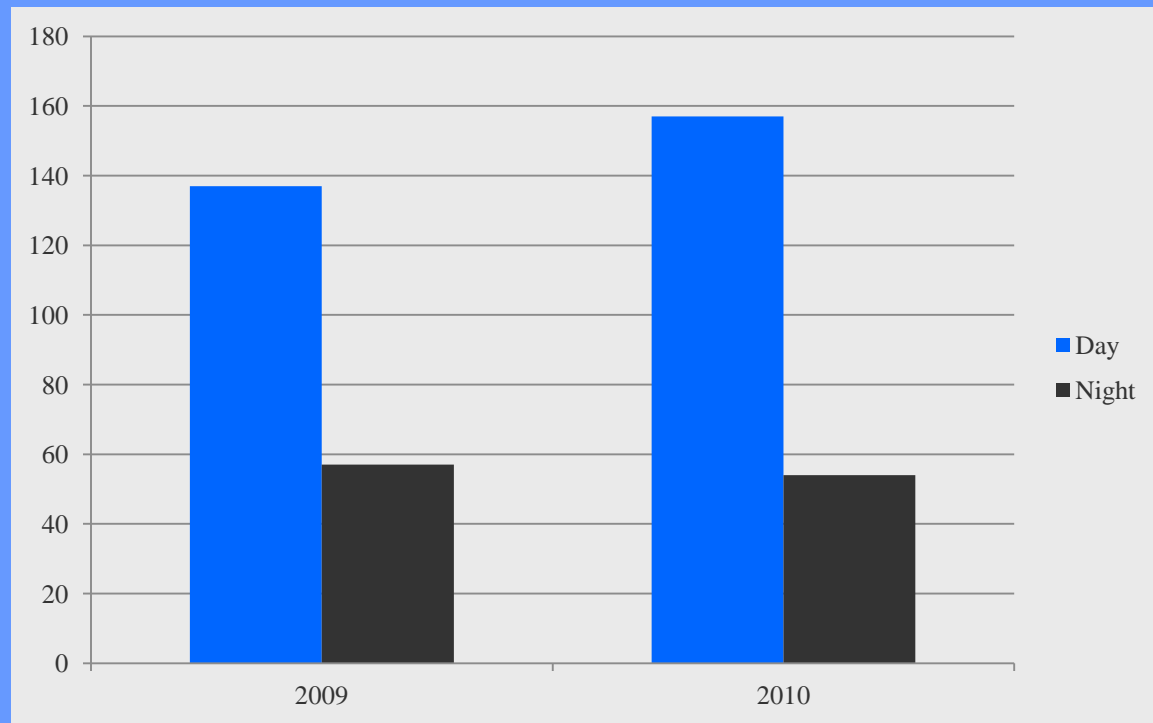
MONTHLY NOISE COMPLAINT BREAKDOWN

Total Noise Complaints Increased by 20 % for 2010

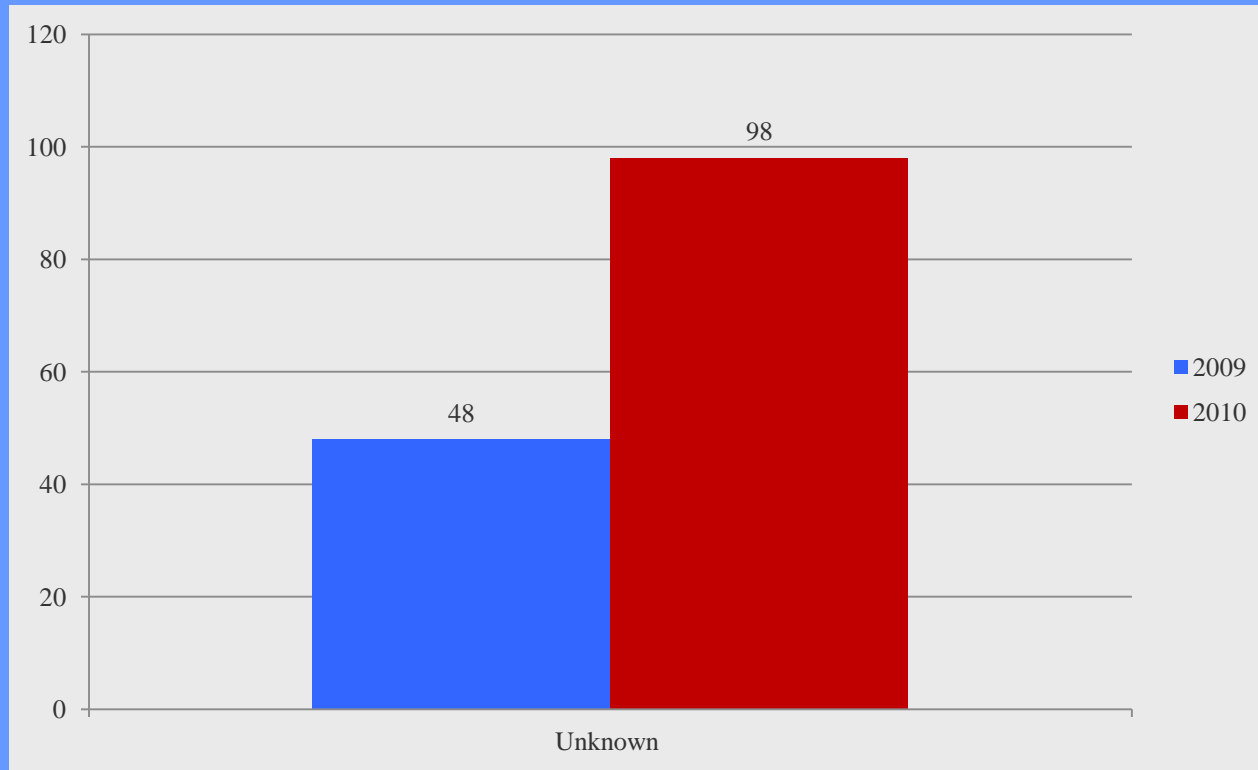


Note: May and September differences were due to Unknown sources and Air Show Aircraft.

Noise Complaints by Time of Day



Unknown Source Complaints



Unknown sources indicates aircraft that may or may not have departed Republic Airport. Due to airspace congestion in the New York Area, aircraft identified as an Unknown Source may have been enroute to or originating from another airport in the area.

Questions?

